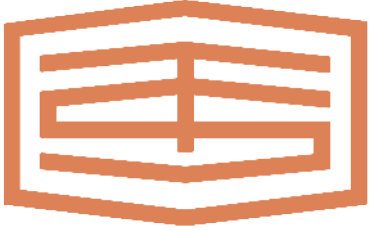


# Am I Regulated? (Property-Carrier Edition)

Aside from certain operational-specific exemptions, the following chart can be used as a general guide to determine whether your property-carrying operations are subject to the federal motor carrier safety regulations.



Trucksafe is a leading provider of DOT compliance training content and consulting services. We help carriers develop and maintaining cutting-edge safety programs. Learn more at [www.trucksafe.com](http://www.trucksafe.com).

Generally speaking, the regulations apply to those that operate "commercial motor vehicles" (CMVs) in interstate commerce. The term "commercial motor vehicle" is defined in the regulations at 49 C.F.R. 390.5 and 383.5.

## Pertinent Regulatory Parts:

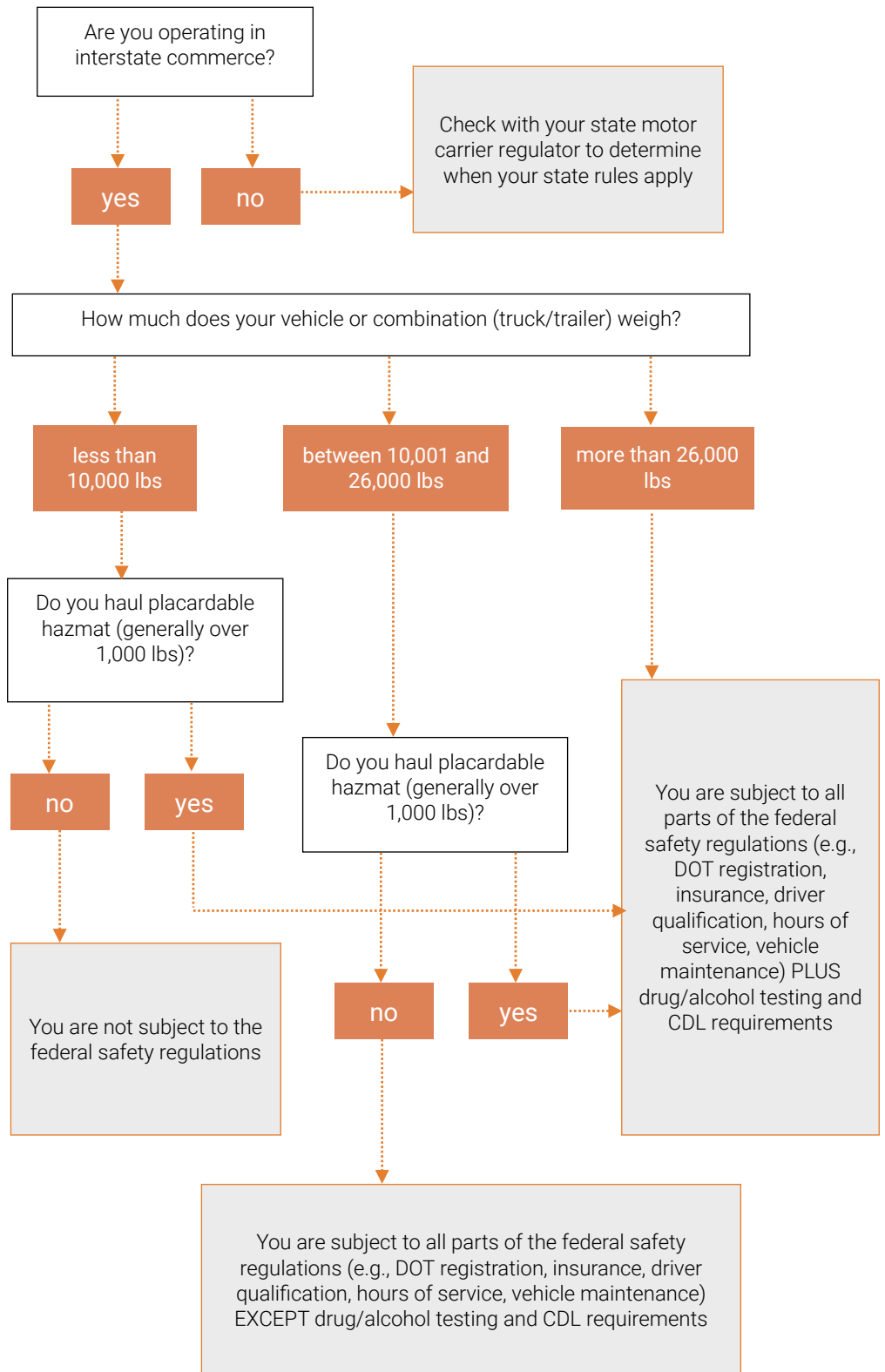
**Driver Qualification**  
49 C.F.R. Part 391

**Hours-of-Service**  
49 C.F.R. Part 395

**Vehicle Maintenance**  
49 C.F.R. Part 396

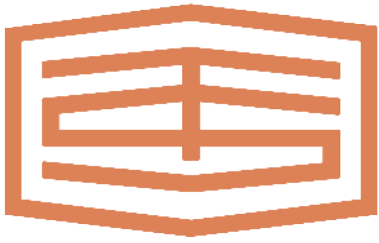
**Drug/Alcohol Testing**  
49 C.F.R. Parts 40 & 382

**CDLs**  
49 C.F.R. Part 383



# Am I Regulated? (Passenger-Carrier Edition)

Aside from certain operational-specific exemptions, the following chart can be used as a general guide to determine whether your passenger-carrying operations are subject to the federal motor carrier safety regulations.



Trucksafe is a leading provider of DOT compliance training content and consulting services. We help carriers develop and maintaining cutting-edge safety programs. Learn more at [www.trucksafe.com](http://www.trucksafe.com).

Generally speaking, the regulations apply to those that operate “commercial motor vehicles” (CMVs) in interstate commerce. The term “commercial motor vehicle” is defined in the regulations at 49 C.F.R. 390.5 and 383.5.

## Pertinent Regulatory Parts:

**Driver Qualification**  
49 C.F.R. Part 391

**Hours-of-Service**  
49 C.F.R. Part 395

**Vehicle Maintenance**  
49 C.F.R. Part 396

**Drug/Alcohol Testing**  
49 C.F.R. Parts 40 & 382

**CDLs**  
49 C.F.R. Part 383

